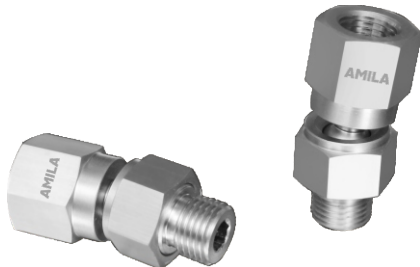


# Ball Joints

## Ball Joints MGL

Connection: G1/4" and G1/2

Ball Joints MGL



### Introduction and application

- ◆ For handling of workpieces with sloping surfaces with the aid of large suction cups.
- ◆ Handling of large sheets of materials such as wood or sheet metal, which may sag when lifted; Flexolink prevents the sheet from being pulled off due to one-sided forces
- ◆ Can be used together with spring plungers to compensate for differing workpiece heights and uneven surfaces.

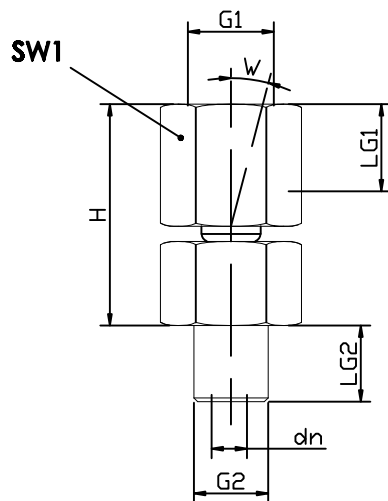
### Technical Data And Ordering Data Ball Joints MGL

Type	Vertical load [N]	Deflection:max.[°]	Weight [g]	Ordering Data
MGL G1/4-IG G1/4-AG	1500	15	67	90.04.01.00050
MGL G1/2-IG G1/2-AG	2500	15	116	90.04.01.00052

Note:MGL IG(internal thread) AG(external thread)

### Design Data Ball Joints MGL

MGL G1/4 to G1/2



Type	Dimensions[mm]							
	dN	G1	G2	H	LG1	LG2	SW1	W[°]
MGL G1/4-IG G1/4-AG	3.5	G1/4"-F	G1/4"-M	37.5	12.0	10	19	15
MGL G1/2-IG G1/2-AG	4.0	G1/2"-F	G1/2"-M	40.0	14.0	12	24	15